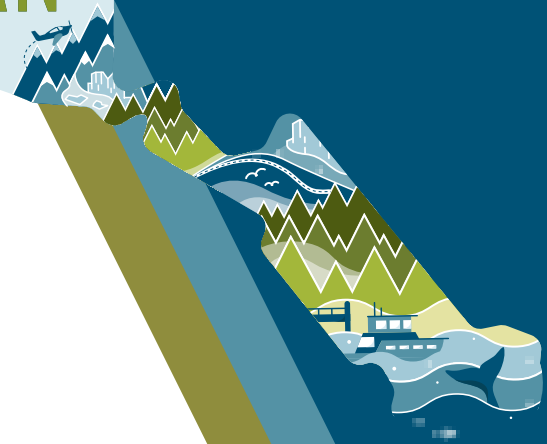




SOUTHEAST ALASKA

TRANSPORTATION PLAN

Organized Village of Saxman



March 12, 2026





AGENDA

- **9:00 to 9:20 AM — Welcome & Introductions:**
 - Introductions
- **9:20 to 9:40 AM — SEATP Update Overview:**
 - Presentation
- **9:40 to 10:20 AM — Open Discussion**
 - SEATP Update discussion or other topics, welcome
- **10:20 to 10:30 AM — Closing Remarks**

OVERVIEW



What is the Southeast Alaska Transportation Plan (SEATP)?

- The updated Southeast Alaska Transportation Plan will guide transportation improvements for the next 20 years. It looks at both travel between communities and local needs that affect the region.
- The plan covers all types of transportation - roads, ferries, airports, trails, to help direct future public investments.
- Area transportation plans identify community priorities and potential projects to meet those needs.
- These plans also help inform the Statewide Transportation Improvement Program (STIP), which funds transportation projects across Alaska.



DOT&PF FAMILY OF PLANS



WHAT THE PLAN CAN DO



The SEATP Update Can:

- Set goals that guide Alaska DOT&PF's transportation investment priorities within the region
- Describe unique transportation characteristics, trends, and other factors that are projected to influence the needs of the region's transportation system over a 20-year planning horizon
- Identify and capture key transportation needs in all modes for community and agency use in advocating for, planning for, programming, and funding improvements.
- Recommend projects, programs, and policies of greatest regional significance and identify recommended funding and implementation strategies.

The SEATP Update Cannot:

- Change future land use
- Change ferry, transit, or air service levels, schedules, or fares
- Change the posted speed limit on roads in the region
- Guarantee project funding
- Design projects
- Make decisions or set priorities for local or tribal transportation infrastructure

What We've Done...

- ✓ **Public Involvement Plan completed:**
 - Website launched
 - Fact sheets and other engagement materials developed
- ✓ **Existing Conditions Report published**
- ✓ **Population and economic updates advanced**
- ✓ **Public Meetings:**
 - Two in-person (Ketchikan and Juneau), two virtual
- ✓ **Small Group Meetings & Conferences:**
 - Southeast Conference Annual and Mid-Session Meetings
 - AML Conference
 - Tribal Engagement Meeting
 - DOT&PF Risk-Resiliency Workshop

What's Up Next...

- **Transportation System Analyses & Plan Alignment**
 - Coordinate with AMHS Long-Range Plan, 10-Year Plan, Statewide LRTP, and other relevant plans
 - Evaluate risk & resiliency, funding & implementation
- **Mid-Plan Updates**
 - Tribal & Community Meetings
 - Additional conference opportunities
- **Finalize Vision and Goals**
- **Draft SEATP Update**

WHAT DID WE HEAR?



- Transportation Reliability and Connectivity
- Infrastructure – Maintenance and Resiliency
- Community and Tribal Engagement
- Environmental and Sustainability
- Safety and Accessibility
- Air and Ferry Service
- Active and Public Transportation
- Economy and Freight
- Lynn Canal Projects – Cascade Point and Chilkat Connector

What are your top transportation priorities for your community?



The whiteboard contains the following handwritten notes:

- Top left: We should prioritize retaining FF and maintaining the safe - not on a road that serves as when mine (Nesqueam)
- Top center: Bus and paratransit to Auke Bay ferry terminal support at Auke Bay
- Top right: More frequent bus routes every 15-20 mins. More connected routes. ADA accessibility. more sidewalks & bike lanes
- Right side: IMPROVE + MAINTAIN ROAD SURFACE EG. MORE VISIBLE LANE MARKING
- Far right: Reliable ferry service
- Far right: January Lynn Canal Service
- Far right: Regular ferry service thru other regions including Yakutat
- Bottom left: Maintain vessels place when needed. NEW ROADS ARE NEEDED
- Bottom left: Bike paths not just bike lanes
- Bottom center: We can't get to a ferry terminal, either prior to us on maintenance of current (no new safety upgrades, more guards!)
- Bottom center: more Affordable Ferries. Give a number to call for small driver pickup/drop
- Bottom center: Maintaining reg. air service
- Bottom center: Bus to JNU Ferry
- Bottom center: This ↑
- Bottom right: Ferry pilot! TERMINAL ONLY AT AUKE BAY (not Cascade)
- Bottom right: Predictable Ferry Service



PROPOSED VISION STATEMENT

An integrated land, air, and marine transportation system that provides safe and equitable access, fosters economic growth, provides efficient and cost-effective intermodal connections, and remains resilient and well-maintained.





PROPOSED GOALS



Safety and Accessibility:

Provide safe and equitable access to transportation for all communities in Southeast Alaska



Economic Vitality:

Support regional economic growth by enhancing transportation infrastructure and services that facilitate commerce and tourism.



System Reliability:

Improve the reliability of air, marine, and land transportation systems to ensure consistent and dependable service.



Resilience and Preservation:

Support a transportation system that remains resilient to hazards and is maintained in a state of good repair for long-term sustainability. .



Cost-Effective System:

Strengthen intermodal connections between land, air, and marine modes to create an integrated and efficient transportation network.



IDENTIFIED RISKS



Natural Hazards, Weather Events



Funding



Population





FEEDBACK



- Looking ahead 20 years, what changes or improvements would you like to see in your community's transportation system?
- What are the most important priorities or goals for transportation in your community (e.g., safety, accessibility, sustainability, economic growth)?
- Are there specific types of infrastructure, such as roads, sidewalks, bike paths, or transit, that you think need attention or improvement?
- Do you have any other ideas or concerns about transportation in your community?
- Email the team **SEATP@dowl.com** or call **DOWL Public Involvement at (907) 562-2000**



STEPS AND SCHEDULE

- Defining Vision, Goals, and Objectives
- Data Verification and Analysis
 - Economic and population forecast updates
 - Transportation system analyses
- Issues and Needs

- Resiliency Analysis
- Needs Identification and Prioritization
- Implementation Strategies
- Developing Draft Plan

- Draft Plan-Out for Public Comment
- Final Plan Anticipated November 2026

Fall 2025 - Winter 2026

Spring - Summer 2026

Fall 2026

- Sharing Information and Seeking Feedback
 - Round 1 Outreach Meetings
 - Southeast Conference Annual Meeting
 - Community Meetings
 - Virtual Meetings

- Sharing Information and Seeking Feedback
 - Round 2 Outreach Meetings
 - Southeast Conference Mid-Session Summit
 - Small Group Meetings

- Sharing Information and Seeking Feedback
 - Round 3 Outreach Meetings
 - Southeast Conference Annual Meeting
 - Community Meetings
 - Virtual Meetings

★ **WE ARE HERE**

Agency, Community, and Interested Party Involvement
Throughout Plan Update Process

WAYS TO GET INVOLVED

Reach out to the Planning Team with any comments or concerns

- **Jill Melcher**
DOT&PF Project Manager
(907) 465-4445
 - **Renee Whitesell**
DOWL Project Manager
(907) 562-2000
 - **DOWL Public Involvement**
(907) 562-2000
- ✉ **Email:** SEATP@dowl.com
- 💻 **Website:** www.southeastalaskatransportationplan.com

Keep an eye out for public meeting opportunities



For more information, scan the QR Code

